



License No. 800025015
FL License # CMTL-0003
CLIA No. 10D1094068

Certificate of Analysis

Compliance Test

Green CBD
Hartford, CT 06114

Batch # 210319BD
Batch Date: 2021-03-19
Extracted From: Hemp

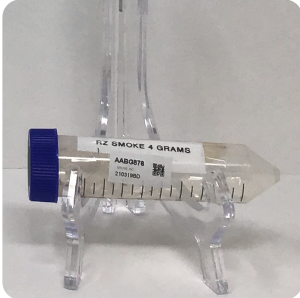
Test Reg State: Florida

Order # GRO210427-170058
Order Date: 2021-04-27
Sample # AABG876

Sampling Date: 2021-05-02
Lab Batch Date: 2021-05-02
Completion Date: 2021-05-07

Initial Gross Weight: 18.420 g
Net Weight: 4.106 g

Number of Units: 1
Net Weight per Unit: 4106.000 mg



Product Image

Potency Tested

Delta 8/Delta 10 Potency
12

Specimen Weight: 51.940 mg

Analyte	Dilution (1:n)	LOD (%)	LOQ (%)	Result (mg/g)	(%)
Delta-8 THC	100.000	0.000026	0.001	853.900	85.390
Delta-10 THC	1000.000	0.000003	0.001	<LOQ	<LOQ
Delta-9 THC	100.000	0.000013	0.001	<LOQ	<LOQ
CBC	100.000	0.000018	0.001	<LOQ	<LOQ
CBD	100.000	0.000054	0.001	<LOQ	<LOQ
THCV	100.000	0.000007	0.001	<LOQ	<LOQ
THCA-A	100.000	0.000032	0.001	<LOQ	<LOQ
CBN	100.000	0.000014	0.001	<LOQ	<LOQ
CBGA	100.000	0.000008	0.001	<LOQ	<LOQ
CBG	100.000	0.000248	0.001	<LOQ	<LOQ
CBDV	100.000	0.000065	0.001	<LOQ	<LOQ
CBDA	100.000	0.00001	0.001	<LOQ	<LOQ

Tested
(LCUV)

Potency Summary

Total Delta 8 85.390%	Total Delta 10 None Detected
Total THC None Detected	Total CBD None Detected
Total CBG None Detected	Total CBN None Detected
Other Cannabinoids None Detected	Total Cannabinoids 85.390% 3,506.113mg

Xueli Gao
Ph.D., DABT
Lab Toxicologist

Ailxia Sun
D.H.Sc., M.Sc., B.Sc., MT (AAB)
Lab Director/Principal Scientist



Definitions and Abbreviations used in this report: *Total CBD = CBD + (CBD-A * 0.877), *Total THC = THCA-A * 0.877 + Delta 9 THC, *CBG Total = (CBGA * 0.877) + CBG, *CBN Total = (CBNA * 0.877) + CBN, *Other Cannabinoids Total = CBC + CBDV + THCV + THCV-A, *Total Detected Cannabinoids = CBD Total + CBG Total + CBN Total + THC Total + CBC + CBDV + THCV + THCV-A, *Analyte Details above show the Dry Weight Concentrations unless specified as 12% moisture concentration. (mg/ml) = Milligrams per Milliliter, LOQ = Limit of Quantitation, LOD = Limit of Detection, Dilution = Dilution Factor (ppb) = Parts per Billion, (%) = Percent, (cfu/g) = Colony Forming Unit per Gram (cfu/g) = Colony Forming Unit per Gram, LOD = Limit of Detection, (µg/g) = Microgram per Gram (ppm) = Parts per Million, (ppm) = (µg/g), (aw) = aw (area ratio) = Area Ratio, (mg/Kg) = Milligram per Kilogram, *Measurement of Uncertainty = +/- 5%



This report shall not be reproduced, without written approval, from ACS Laboratory. The results of this report relate only to the material or product analyzed. Test results are confidential unless explicitly waived otherwise. Accredited by a third-party accrediting body as a competent testing laboratory pursuant to ISO/IEC 17025 of the International Organization for Standardization.